



## **Topics**

<a href="#"><u>Screen Saver Buddy</u></a>	<a href="#"><u>Toolman Start Options</u></a>
<a href="#"><u>Wallpaper Buddy</u></a>	<a href="#"><u>Convert HTML to TXT</u></a>
<a href="#"><u>Cookie Buddy</u></a>	<a href="#"><u>Folder Menu</u></a>
<a href="#"><u>DOS Buddy</u></a>	<a href="#"><u>File Operation</u></a>
<a href="#"><u>Date Buddy</u></a>	<a href="#"><u>Registering <b>Toolman</b></u></a>
<a href="#"><u>Internet Tools Menu</u></a>	<a href="#"><u>Updates and upgrades</u></a>
<a href="#"><u>Program Menu</u></a>	<a href="#"><u>Hardware Requirements</u></a>
<a href="#"><u>Connect to</u></a>	<a href="#"><u>User's License</u></a>
<a href="#"><u>The Tool belt</u></a>	



The new Toolman systray icon was created by my little sister.

Visit her [100% Tenchi Mujo](http://www.geocities.com/Tokyo/Temple/5692) Page (http://www.geocities.com/Tokyo/Temple/5692)

Visit the [Ah! My Goddess Page](http://www.geocities.com/Tokyo/Ginza/1224) (http://www.geocities.com/Tokyo/Ginza/1224)

Visit my buddy's pages [Cyber Formula](http://members.tripod.com/~asurada/index.html) (http://members.tripod.com/~asurada/index.html) and [Video Games Page](#) (http://www.geocities.com/TimesSquare/Alley/1512)

**Screen Saver Buddy lets you**

Start a screen saver

Disable / Enable screen saver

Configure screen savers by calling Windows' Screen Saver Dialog

**To start a screen saver**

Use the secondary mouse button and click once on Toolman's icon in systray. Then click 'Start screen saver now'.

Use the primary mouse button to double-click Toolman's icon in systray.

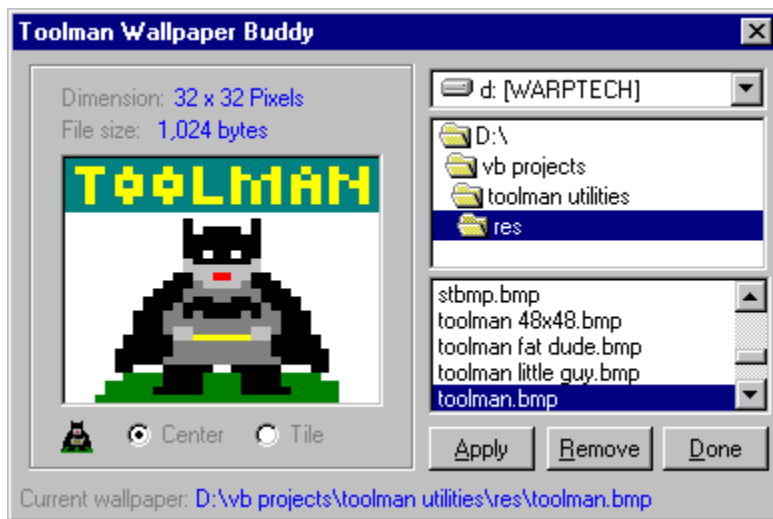
**To disable or enable screen saver**

Use the secondary mouse button and click once on Toolman's icon in systray. Then click 'Disable screen saver'. If the screen saver is disabled, a check mark is shown

When you point the mouse pointer to Toolman's icon in systray. The tooltip will show the screen saver's status. Whether it's disabled or enabled.

To configure screen saver, click 'Configure screen saver' in the Tool belt flyout menu.





Wallpaper Buddy lets you change Windows wallpaper on the fly.

**To change wallpaper**

Go to the directory where your wallpaper is located in. Select the file in the file list box and click Apply or double-click the file.



Cookie Buddy blocks cookie files that are sent to your computer when you surf the Internet.

### **IMPORTANT**

Before using Cookie Buddy for the first time, make sure the following options are set correctly in your browser(s).

#### **Internet Explorer®**

1. Go to 'Options' Click 'View' 'Options'
2. Click the "Advanced" tab
3. Make sure you checked 'Warn before accepting 'cookies''
4. Click OK

#### **Internet Explorer® 4.x**

1. Go to 'Internet Options' Click 'View' 'Internet Options'
2. Click the 'Advanced' tab
3. Select 'Prompt before accepting cookies'
4. Click OK

#### **Netscape® Navigator**

1. Go to 'Options. Click 'Network Preferences'
2. Click the 'Protocols' tab
3. Make sure you checked 'Accepting cookies'
4. Click OK

#### **Netscape® Navigator 4.x**

1. Click 'Edit' then 'Preferences'
2. Click 'Advanced'
3. Make sure you checked 'Warn me before accepting a cookie'
4. Click OK

Cookie Buddy will remind you the first time you use it.

You can start Cookie Buddy by using the secondary mouse button to click once on Toolman's icon in systray (where the time is) and then click 'Cookie Buddy' on the menu. You will be able to see the Cookie Buddy icon shown in systray. You can also start Cookie Buddy when you start Toolman. Choose the option in the Tool belt flyout menu.



#### **To close Cookie Buddy**

Use the secondary mouse button to click once on the Cookie Buddy icon in systray and then select Close Cookie Buddy from the menu.

#### **You can stop Cookie Buddy from rejecting cookies**

Use the primary mouse button to click once on the Cookie Buddy icon. To enable it, just click it again.

Closing it also stops rejecting cookie files.



### Connect To (Dial-Up Networking)

Toolman uses the default Internet Profile and put the Dial-Up name to the "Connect to" menu. If the Dial-Up name shows in Toolman's menu is not the one you want. Follow the instruction below to change it.

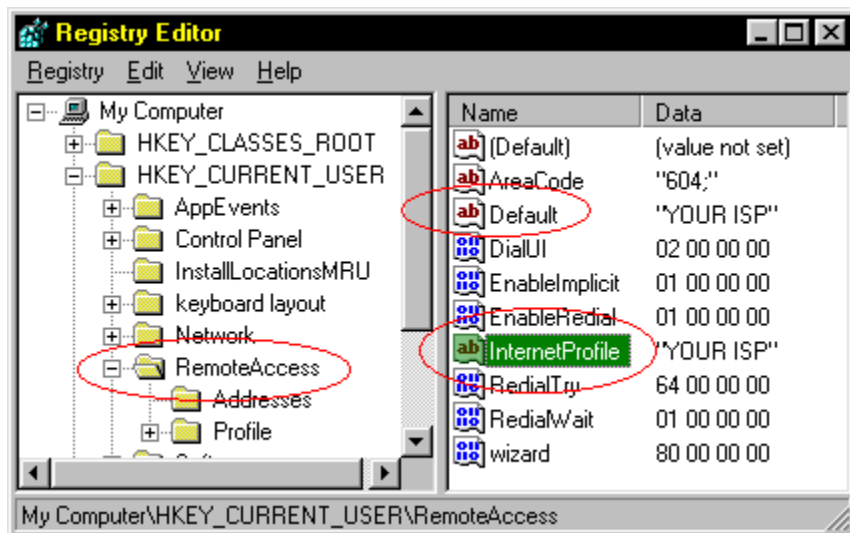
#### Instructions

1. Open '**Regedit.exe**'
2. Expand the key '**HKEY\_CURRENT\_USER**'
3. Click on the key '**RemoteAccess**'

On the right side of the 'Registry Editor', you will find '**Default**' and '**InternetProfile**'.

Double-click either one of them to change their setting. Enter the exact Dial-Up name. (case sensitive)

Toolman looks for '**InternetProfile**' first. If it is missing, it would look for '**Default**'. If both are missing. This function would be disabled.



**Toolman Desktop Buddy** is a Freeware. You do NOT have to pay a dime to register.

If you register, you will be notified by e-mail if there is an updated version of Toolman.

To register Toolman, please go to <http://www.geocities.com/SiliconValley/Lakes/6672/toolmanreg.html>

Please note that Toolman's Workshop in CADVision (<http://www.cadvision.com/clarencechau/toolman.html>) will be down some time in November. Remember to go to the site in GeoCities (<http://www.geocities.com/SiliconValley/Lakes/6672>)

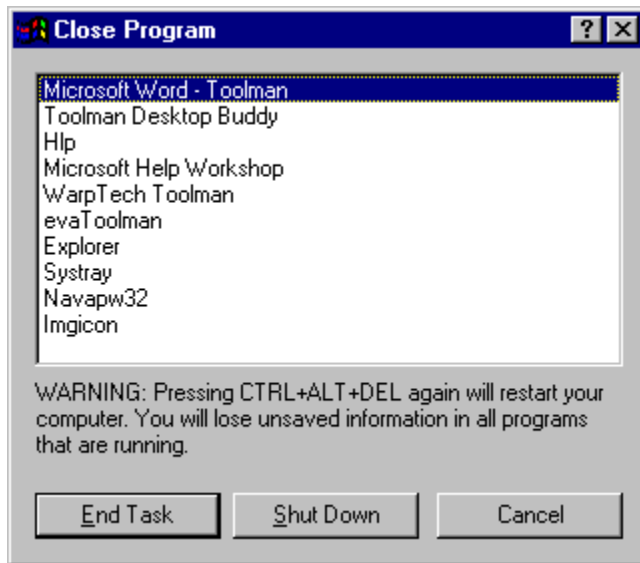
If you wish to contribute, you are welcomed to send any amount you want (payable in Canadian banks please) through regular mail. Please [e-mail \(badams@sprint.ca\)](mailto:badams@sprint.ca) me for my mailing address.



Updates and upgrades are provided. If there is any update or upgrade, registered users will be notified by e-mail. Files can be found at this address

<http://www.geocities.com/SiliconValley/Lakes/6672>





The Close Program Dialog pops up after you press Ctrl+Alt+Del once. (If you press the keys twice, the computer will restart without properly closing all running programs.) The dialog allows you to terminate any running programs including screen savers. If a person does not know the password want to deactivate the screen saver, that person can use the Close Program Dialog to terminate the running screen saver without knowing the password.





**Hardware Requirements**

Processor	486DX 33MHz or higher
Operating System	Windows 95
RAM	8 MB
Hard Drive Space	2 MB
Display	VGA or higher
Pointing Device	Mouse or compatible pointing device



Toolman Desktop Buddy is "unsupported freeware."

You may not modify, translate, reverse engineer, decompile, disassemble (except to the extent applicable laws specifically prohibit such restriction), or create derivative works based on the Software, or remove any proprietary notices or labels on the Software.

Title, ownership rights, and intellectual property rights in and to the Software shall remain with Clarence Chau.

Unless otherwise provided by written agreement with Clarence Chau, this software is provided "as is" without warranty of any kind, expressed or implied, including, but not limited to, the implied warranties of merchantability of fitness for a particular purpose. The entire risk as to the quality and performance of the Software is borne by you. Should the Software prove defective, you and not Clarence Chau assume the entire cost of any service and repair. This disclaimer of warranty constitutes an essential part of the agreement.

While reasonable efforts have been made to assure the accuracy of this software, in no event shall Clarence Chau be liable for direct, indirect, special, incidental, or consequential damages resulting from any defect in this software.

This license will terminate automatically if you fail to comply with the limitations described above. On termination, you must destroy all copies of the Software.


Clarence Chau

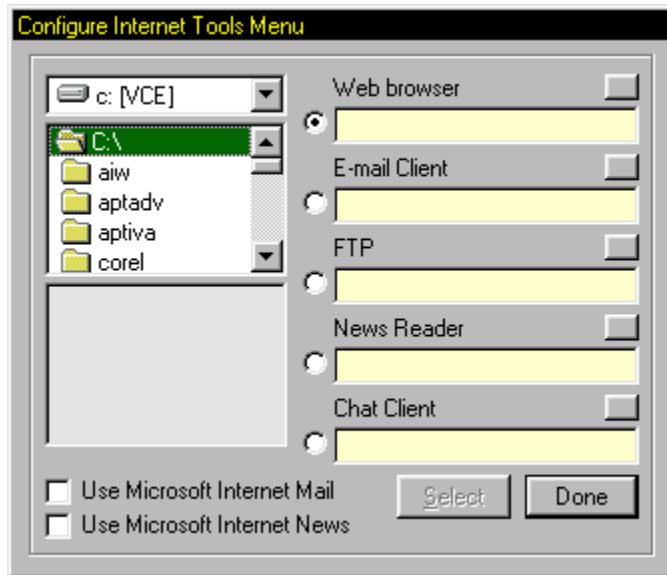
[badams@sprint.ca](mailto:badams@sprint.ca)



Toolman's Internet Tools Menu lets gives you access to your internet utility software

### Configure the menu

Right-click on the icon  and then click 'Configure'. The configure dialog will come out.



Double-clicking the icon  will call the 'Connect To' dialog. This is the same as the 'Connect to' in Toolman's menu.

If you want to use Netscape Mail or News, find 'netscape.exe'. Then set the path to E-mail Client and News Reader. Toolman will modify the path automatically.

You can only enter the path for programs by selecting the files listed in the file list box. You can not manually enter them into the text boxes.



The Tool belt menu currently contains the following tools

**Configure screen saver**

Call the Windows 95 Screen Saver Configuration dialog

**Format Floppy Disk**

Call the Windows 95 Format Floppy Disk dialog

**DOS Buddy**

**Windows Explorer**

Launch Windows Explorer

**Control Panel**

Open the Control Panel window

**File Operation**


**Convert HTML to TXT**

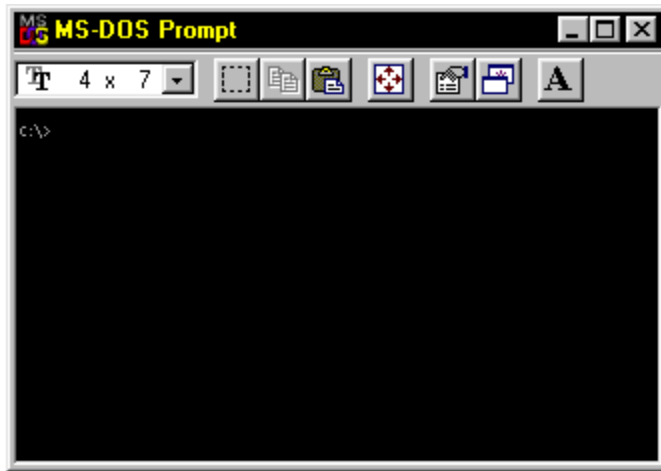
**Clear Documents**

Clears the Documents menu

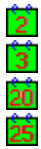
**Disable Ctrl+Alt+Del**



It shows the MS-DOS icon  in the systray. You can open a dos window by left-clicking it.



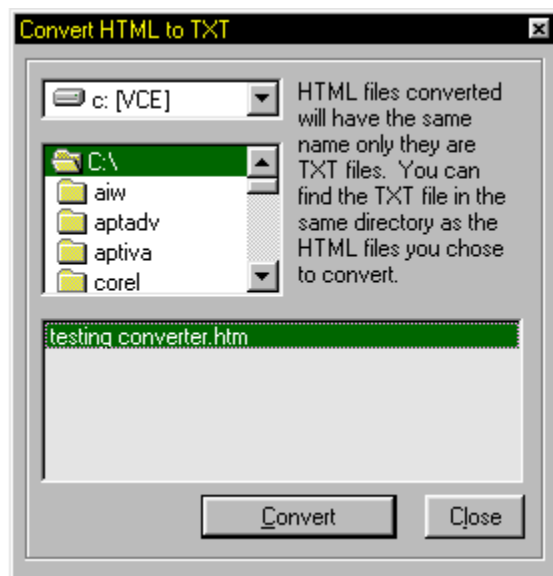
It displays the current day in the systray. It also displays the full date in the tooltip.



The 'Load Date Buddy at startup' option is in the Tool belt flyout menu.



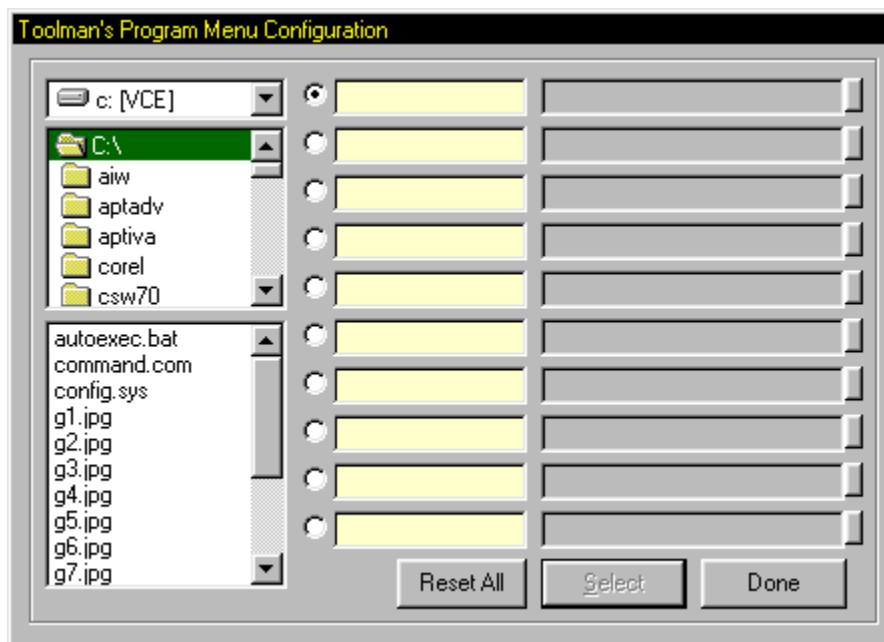
You can convert Internet documents into text files by using this converter. This converter removes all HTML tags in HTML files.



The converted TXT file will have the same name as the HTML file in the same directory.

Convert HTML to TXT is located in the Tool belt flyout menu.

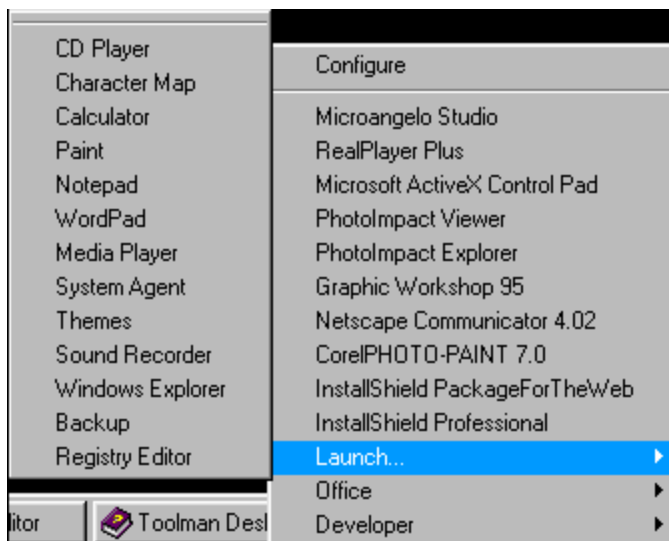




Toolman's Program Menu allows you to set ten of your programs/documents (they must already have an associated program for opening them) in it. It also gives you access to most of the programs that comes with Windows (e.g. Notepad, WordPad, Paint, CD Player, etc.) and the Plus! Pack.

#### Adding programs to the menu

1. Find the executable file for your program by going through the directory list box.
2. Select the file in the file list box.
3. Select the radio button in front of the program title text box.
4. Click 'Select' to set the path for the program.





**Path for web browser**

The text boxes are locked so you cannot enter the paths manually.

To select a program, locate the executable file using the directory listbox.

**Path for e-mail client**

If you wish to use Netscape® Mail, simply locate Netscape.exe, click the radio button in front of this text box, then click 'Select'. It will be automatically updated. The text boxes are locked so you cannot enter the paths manually. To select a program, locate the executable file using the directory listbox.

e.g. C:\Program Files\Netscape\Communicator\Programs\netscape.exe -mail

**Path for FTP client**

The text boxes are locked so you cannot enter the paths manually.

To select a program, locate the executable file using the directory listbox.

**Path for news reader**

If you wish to use Netscape® News, simply locate Netscape.exe, click the radio button in front of this text box, then click 'Select'. It will be automatically updated. The text boxes are locked so you cannot enter the paths manually. To select a program, locate the executable file using the directory listbox.

e.g. C:\Program Files\Netscape\Communicator\Programs\netscape.exe -news

**Path for chat client**

The text boxes are locked so you cannot enter the paths manually.

To select a program, locate the executable file using the directory listbox.

**Use Microsoft Internet Mail**

Check this box if you wish to use Microsoft Internet Mail. The path will be automatically added to the E-mail client path text box. You will not be able to change the path in the path if this check box is checked.

CLSID: Internet Mail.{89292102-4755-11cf-9DC2-00AA006C2B84}

If you do not have Microsoft Internet Mail installed, this check box will be disabled.

**Use Microsoft News Reader**

Check this box if you wish to use Microsoft News Reader. The path will be automatically added to the News Reader path text box. You will not be able to change the path in the path if this check box is checked.

CLSID: Internet News.{89292103-4755-11cf-9DC2-00AA006C2B84}

If you do not have Microsoft News Reader installed, this check box will be disabled.

Clear the path entry for the corresponding program

Click this button to set the path for the program

Click the radio button for the corresponding program to set the path

Microsoft Internet Explorer®



[Click here to download](#)

Select the HTML file to convert to TXT file.

You can either double-click on the file or select the file first then click 'Convert'.

Click to convert the selected file

Click to apply selected wallpaper

Click to remove current wallpaper



Enter the title for your program to show on the menu

Path for your program.

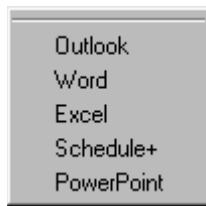
The text boxes are locked so you cannot enter the paths manually.

To select a program, locate the executable file using the directory listbox.

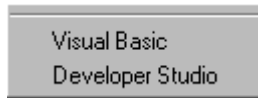
Click to reset all entries. You will be prompt for the operation

Windows' programs. These are all the programs Toolman would try to detect on your computer.

The ten programs of your choice. Each title can have a maximum of 50 characters.



Toolman looks for these Microsoft Office components installed on your computer: Outlook, Word, Excel, Schedule+ and, PowerPoint. This menu item will not show if you do not have any of the above components properly installed on your computer.



If you have Microsoft Visual Basic® or Microsoft Developer Studio installed, you will see this in the menu.

Drive combo box. It lists all available drives on your computer.

Directory list box. It shows all directories on the drive selected in the drive combo box on your computer.

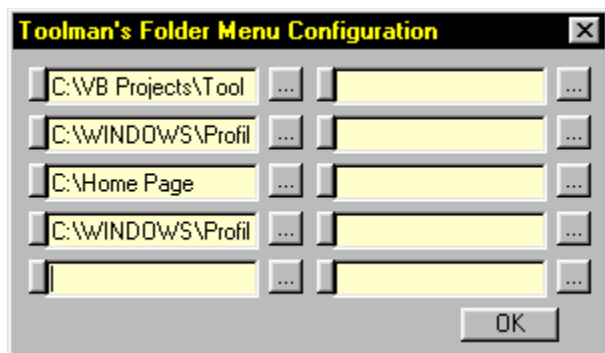
File list box. It lists files in the directory selected in the directory list box.





Toolman

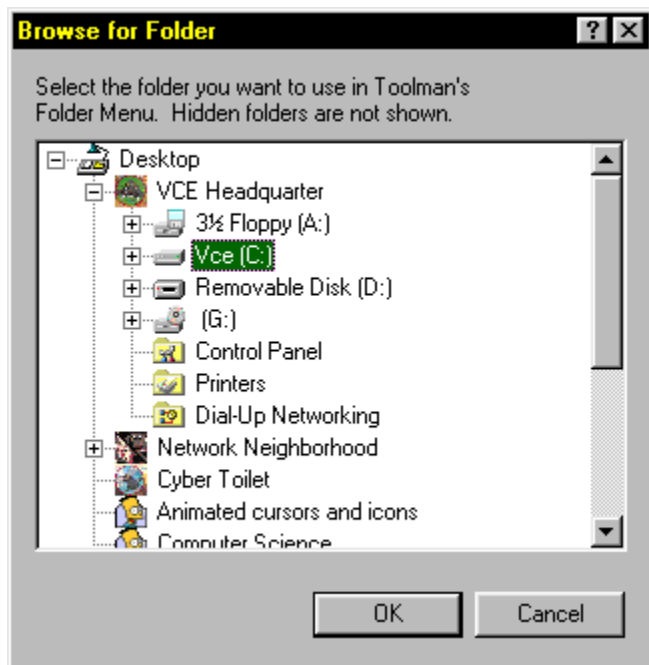
Double-click to change the value  
e.g. You use the Dial-Up Networking setting  
'Toolman' to connect to your ISP. You would  
enter 'Toolman' as the value. Restart Toolman  
after you have done so. You would see  
'Connect to Toolman' on the menu.



Toolman's Folder Menu allows you to open ten of your favorite folders.

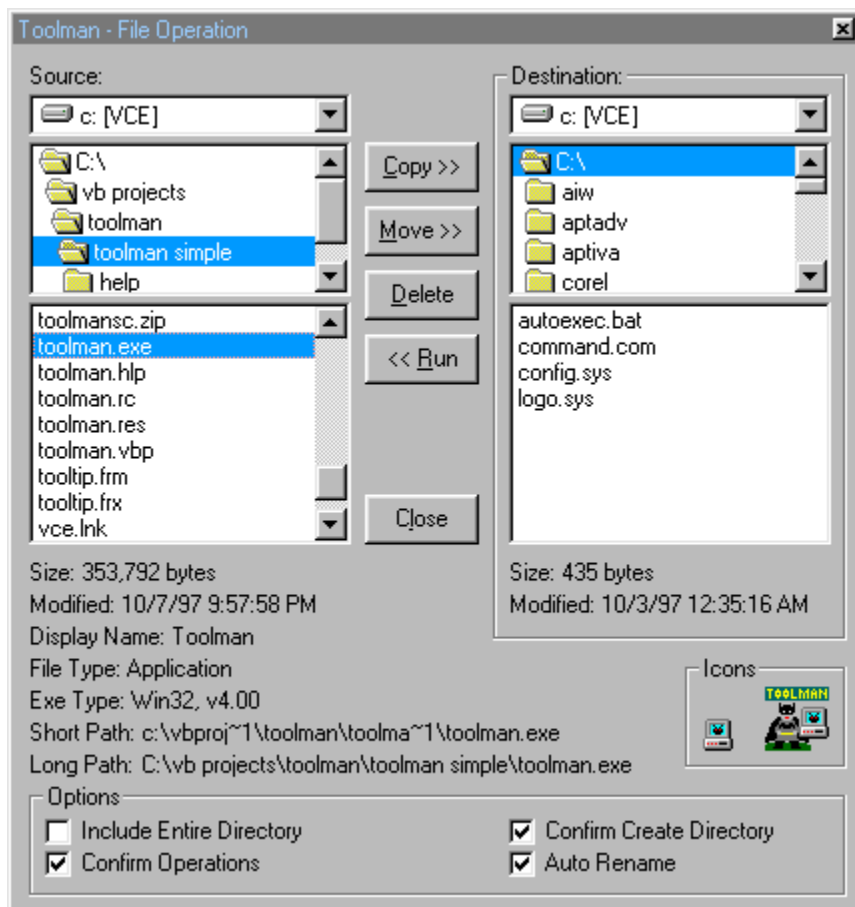
Note: Toolman cannot open folders with hidden attribute.

To choose folders, simply click the button  then the browse for folder dialog will come out.



Then locate the folder and click OK.





File Operation allows you to quickly copy, delete, move files and folders.



Copy the selected file(s) in the source folder to the new destination

Move the selected file(s) in the source folder to the new destination

Delete the selected files(s) in the source folder

Run or open the file selected in the source folder

**Press 'Connect' automatically**

Press the 'Connect' button on the 'Connect To' dialog.

**Load Internet Tools Menu**

Click this to make Toolman loads the Internet Tools Menu when it starts.

**Load Program Menu**

Click this to make Toolman loads the Program Menu when it starts.

**Load Cookie Buddy**

Click this to make Toolman starts Cookie Buddy when it starts.

**Load Folder Menu**

Click this to make Toolman loads the Folder Menu when it starts.

**Load Date Buddy**

Click this to make Toolman starts Date Buddy when it starts.

**Load DOS Buddy**

Click this to make Toolman starts DOS Buddy when it starts.

**Run Toolman at startup**

Click this to run Toolman when Windows starts.







